

KRISTIANSTAD

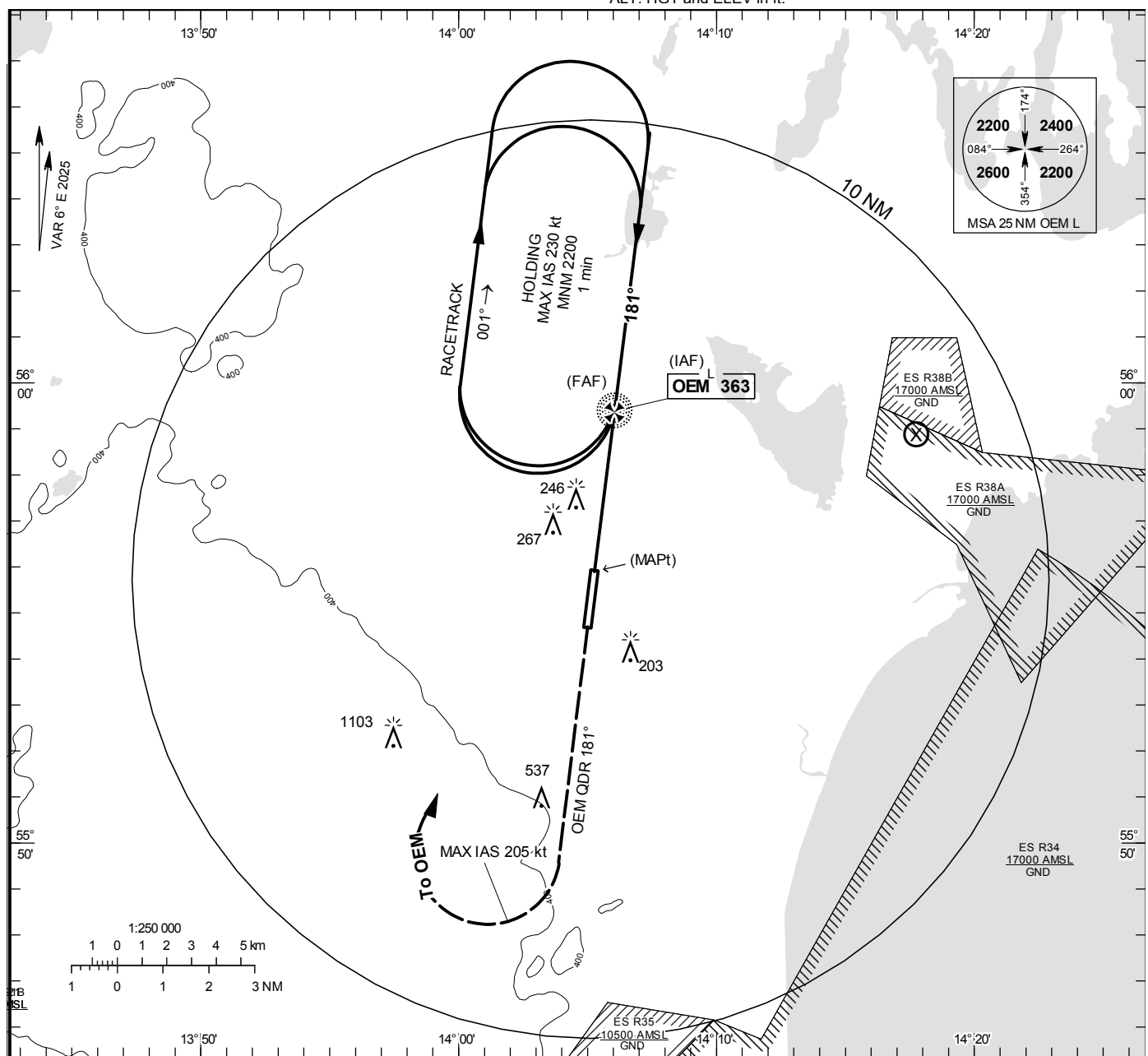
NDB RWY 19

KRISTIANSTAD TOWER 129.355

THR ELEV 73.8 ft, AD ELEV 77 ft

OCH are related to THR.
Circling OCH are related to AD ELEV.
BRG are MAG
ALT, HGT and ELEV in ft.

INSTRUMENT
APPROACH
CHART – ICAO



TA 5000 ft AMSL

MAX speed within racetrack 230 kt IAS

CLIMB ON OEM QDR 181° TO
2500. TURN RIGHT (MAX IAS 205 kt)
TO OEM AND JOIN HOLDING

(IAF)
OEM

Cat A: 2.5 min
Cat B: 2.0 min
Cat C/D: 1.5 min

(FAF) 1350

2500

OEM QDR 181°

(MAPt)

5.7% (3.3°)

OCA(H)

1000

OCA (H)					Final approach	Distance FAF-MAPt 3.5 NM					
Cat of ACFT	A	B	C	D	DME MK NM	2		3			
Straight-in Approach	500(430)				ALT	760		1100			
Circling	570(500)	570(500)	940(870)	1500(1430)	GS	kt	80	100	120	140	160
Circling E RWY	500(430)	570(500)	940(870)	940(870)	Time	min:s	2:39	2:07	1:46	1:31	1:19
					Rate of descent	ft/min	460	575	690	805	1035

CHANGE: Editorial